

# Sample of Instruction

**STEP1    STEP2    STEP3**

## **SEE VIEW PG 1A**

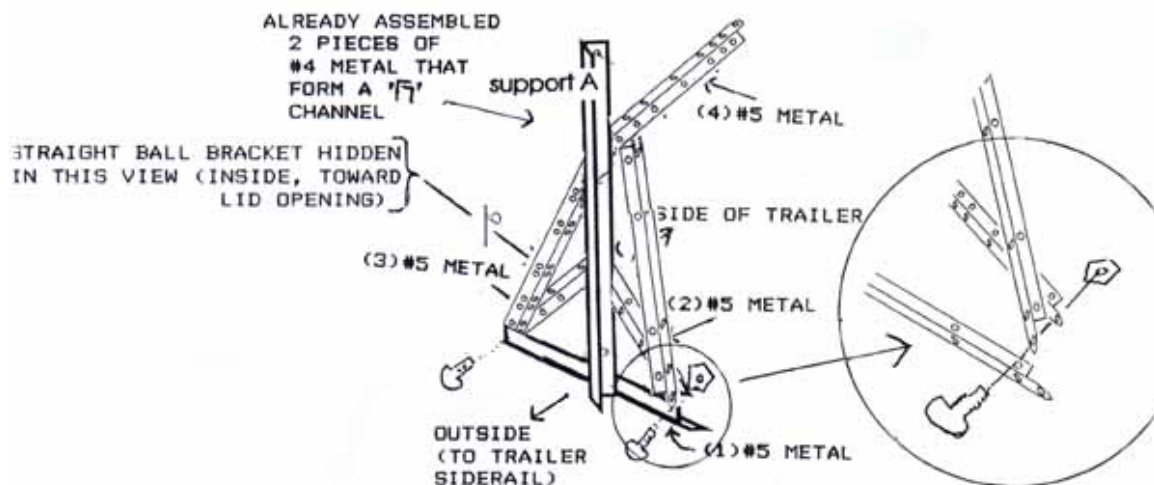
In an effort to make your assembly easier and yet to be able to ship this via UPS, we have provided 3 sub-assemblies.

1. Support 'A' Left
2. Support 'A' Right
3. Roof Hinge Joist

Support 'A' Left, support 'A' Right are provided as a partially assembled unit. For shipping purposed two bolts have to be installed by you. To finish the basic triangle, the bottom is shown here



Rotate the bottom (1) #5 metal as shown below, then unfold the two (2) (3) #5 metal pieces shown and bolt together as shown. Be sure to keep the bolt head and nut on the correct side of the triangle or it will interfere with lid opening and closing.



Pull down to a 45 degree angle the (4) #5 metal piece attached on the upper part of the 'A' channel upright of the support 'A'. This is an angle brace and will be installed pointing to the inside of the enclosure and the 'A' channel upright will be placed next to the trailer side rail.

Repeat the above for both left and right supports

#4 -56 3/4" ANGLE METAL

#5 -24 3/4" 3/4 ANGLE METAL



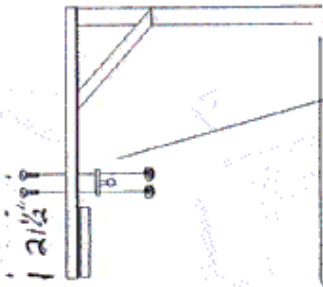
└ - END VIEW



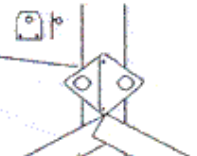
└ - END VIEW

THE STRAIGHT BALL BRACKETS HAVE ALREADY BEEN INSTALLED AS SHOWN HERE FOR THE GAS SPRINGS TO BE INSTALLED LATER.

FRONT VIEW LOWER BRACKET



SIDE VIEW LOWER BRACKET



STRAIGHT BALL BRACKETS FOR GAS SPRING  
STRAIGHT BRACKET

NOTE 2ND LOWER BRACKET WILL BE PLACED ON TOP OF THE FIRST LOWER BRACKET ON 10' FOOT TRAILER

PLACE BRACKETS ON LEFT AND RIGHT SIDES

**STEP 4**

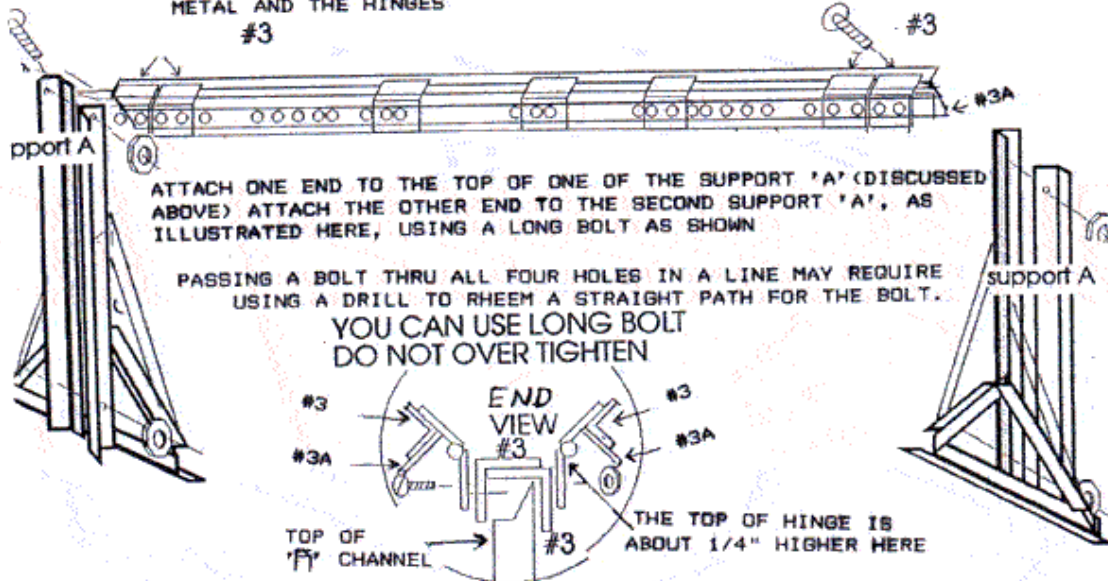
**STEP 5**

LEFT SIDE,

RIGHT SIDE

(HOW LEFT OR RIGHT IS DETERMINED IS NOT IMPORTANT, IT'S JUST A WAY OF SAYING ONE GOES ON ONE SIDE AND ONE GOES ON THE OTHER SIDE)

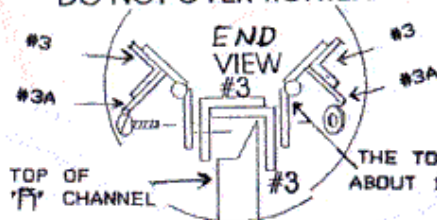
THE LONG ROOF HINGE JOIST SUBASSEMBLY IS MADE WITH #3, #3A METAL AND THE HINGES



ATTACH ONE END TO THE TOP OF ONE OF THE SUPPORT 'A' (DISCUSSED ABOVE) ATTACH THE OTHER END TO THE SECOND SUPPORT 'A', AS ILLUSTRATED HERE, USING A LONG BOLT AS SHOWN

PASSING A BOLT THRU ALL FOUR HOLES IN A LINE MAY REQUIRE USING A DRILL TO RHEEM A STRAIGHT PATH FOR THE BOLT.

YOU CAN USE LONG BOLT  
DO NOT OVER TIGHTEN



TOP OF 'F' CHANNEL

THE TOP OF HINGE IS ABOUT 1/4" HIGHER HERE

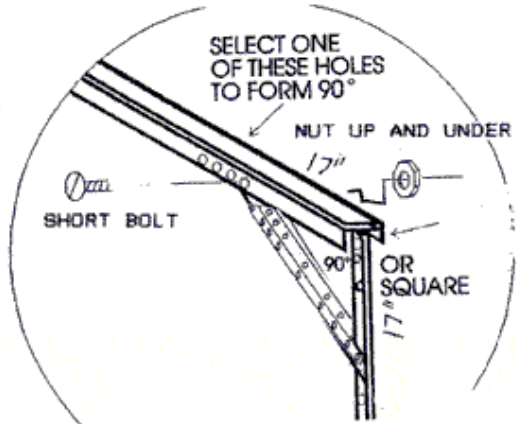
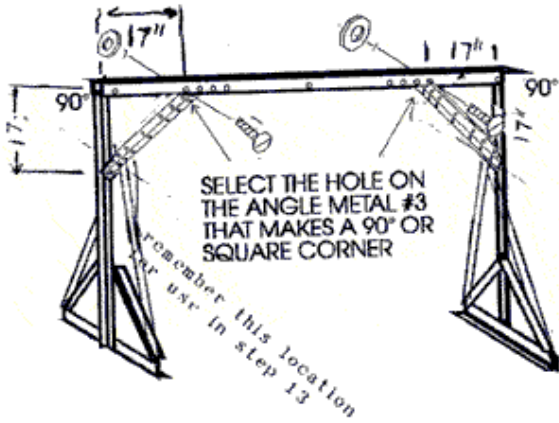
# STEP 6

SEE  
VIEW  
PG 1A

NOW ATTACH THE 2 ANGLE BRACES, LEFT AND RIGHT (4) #5 METAL YOU  
PULLED DOWN TO A 45 DEGREE ANGLE IN STEPS 1,2,3, AS  
ILLUSTRATED HERE

PLACE ANGLE METAL #5 IN ILLUSTRATED  
POSITIONS FOR SUPPORT

USE A SHORT BOLT AND BRING THE NUT  
UP AND IN FROM UNDERNEATH



#5 -24 3/4" 3/4" ANGLE METAL

7 - END VIEW